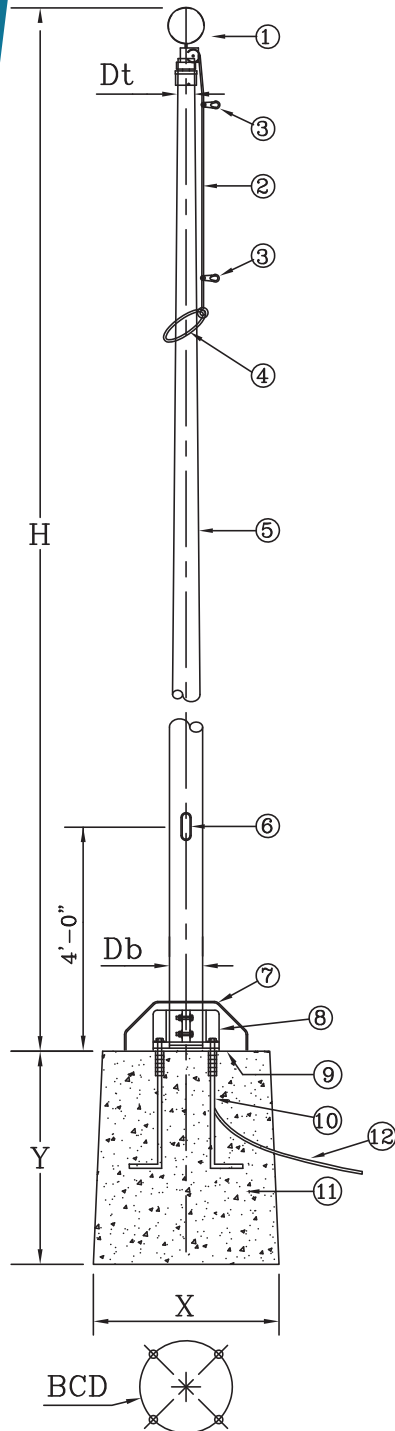


Commercial Cone-Internal Halyard



MODEL : STA (Cone Tapered Aluminum)
 BASE : TYPE "B-5" FIXED
 HALYARD: ECONOLINE INTERNAL SYSTEM

MATERIAL LIST

No	DESCRIPTION	MAT'L	Qty	No	DESCRIPTION	MAT'L	Qty
1	Revolving Ball	Alum	1	7	Base Cover	Alum	1
2	Halyard Line	S.S.	1	8	Fixed Base	Steel	1
3	Flag Snap	Steel	2	9	Template	Wood	1
4	Weighted Loop	Nylon	1	10	Anchor Bolts	Steel	4
5	Tapered Pole	Alum	1	11	Foundation	R.Conc.	1
6	Access Door	Alum	1	12	Lightning Cable	Steel	1

DIMENSIONS

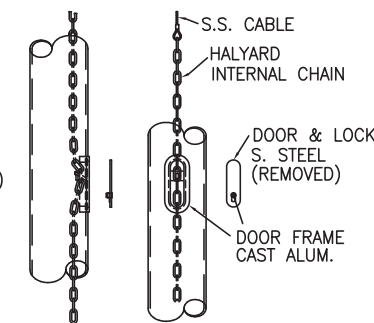
MODEL	POLE				BASE	
	H	Db	Dt	Wall	BCD	Bolts
STA-16	16'-0"	4"	2.75"	.156"	7.88"φ	3/4"φ
STA-20	20'-0"	4"	2.75"	.156"	7.88"φ	3/4"φ
STA-25	25'-0"	4"	2.75"	.156"	7.88"φ	3/4"φ
STA-30	30'-0"	4"	2.75"	.156"	7.88"φ	3/4"φ
STA-35	35'-0"	5"	3"	.188"	7.88"φ	3/4"φ
STA-40	40'-0"	6"	3.5"	.188"	9.25"φ	1"φ

POLE FINISH:

<input type="checkbox"/>	SATIN BRUSHED
<input type="checkbox"/>	CLEAR ANODIZED
<input type="checkbox"/>	LIGHT BRONZE ANODIZED
<input type="checkbox"/>	STANDARD BRONZE ANODIZED
<input type="checkbox"/>	PAINT FINISH

FOUNDATION NOTE:

WE ARE NOT RESPONSIBLE FOR THE REINFORCED CONCRETE FOUNDATION. CONSULT A CIVIL OR SOIL ENGINEER REGARDING LOCAL SOIL CONDITIONS PRIOR TO SPECIFYING OVERALL FOUNDATION DIMENSIONS.



ACCESS DOOR & HALYARD ARRANGEMENT